

## **Security Management System Configuring Multi-site Client (22.12.26.01)**

The Security Management System client application supports 2 modes -

1. Single server connection mode
2. Multiple server connection mode

By default the Security Management System client application, runs in 'single server connection mode'.

However the Security Management System client application can also work in 'multiple server connection mode' and can connect to multiple servers and can browse information from multiple servers simultaneously.

The client application user interface remains the same for both the modes, and all the features are available for both the modes.

Some of the important features available in the Security Management System client application, when working in 'multiple server connection mode' are -

- (a) Viewing list of all cameras from all servers connected to, in form of a tree structure.
- (b) Drag-drop if any cameras from this list on video windows to view video associated with that camera
- (c) Live video viewing and recorded video playback for any cameras
- (d) Receiving alarms generated by all connected servers and ability to acknowledge them
- (e) Searching alarms generated by any of the connected servers
- (f) Image snapshot and video export for any cameras from the connected servers

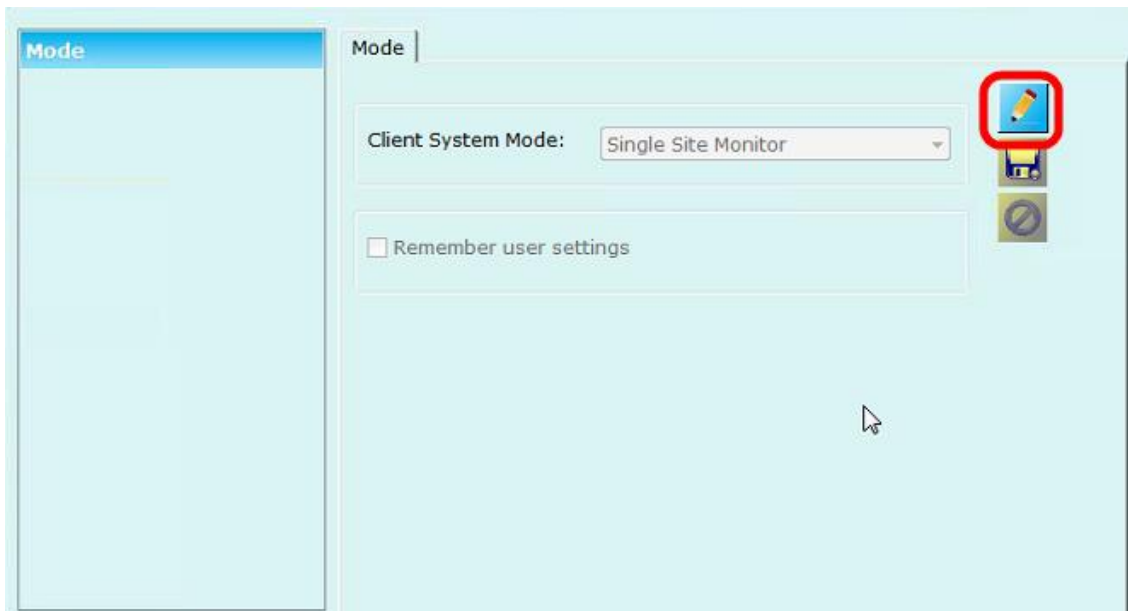
This document describes the steps for configuring the Security Management System client application for 'multiple server connection mode'.

## (A) Configuring 'Multiple Site Monitoring' mode

1. Close the Security Management System client application.
2. If the Security Management System client watchdog application is running, please close that too.
3. Access the programs menu shortcut '[Programs Menu] -> Security Management System -> Client -> Tools -> Multi-site Client Manager'.

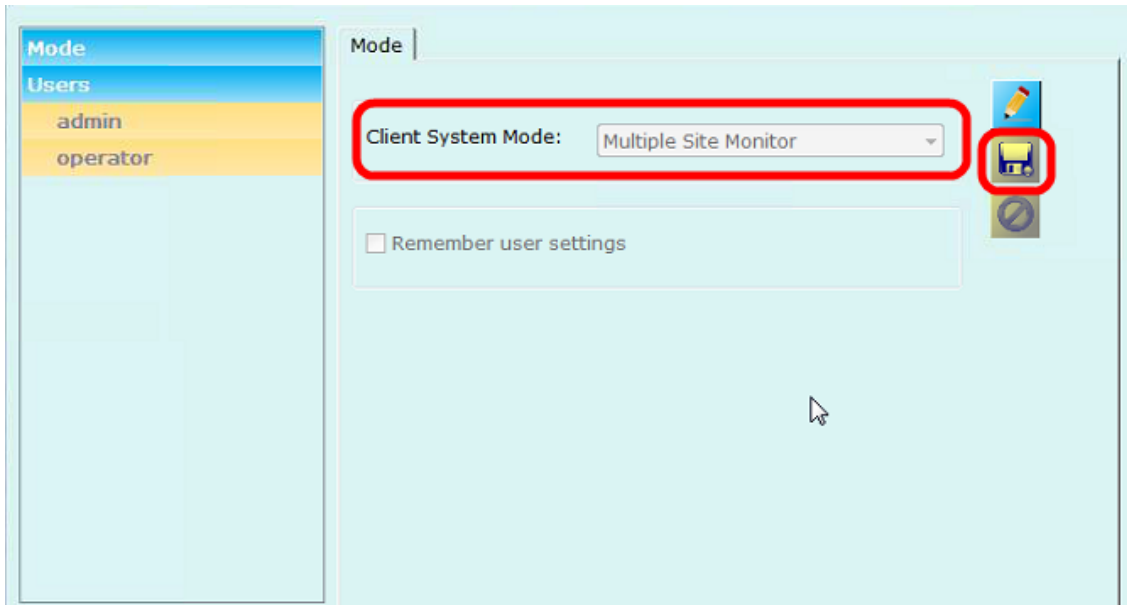
Note – if the programs menu shortcut is not available, please execute the 'Multi-site Client Manager' application by browsing for the same in standard Windows Explorer. The application 'MultisiteClientManager.exe' is available in the 'Security Management System Client software' installation directory.

4. This will display the login dialog.
5. **Default 'User Name' is 'admin' (without the quote characters) and default password is 'admin' (without the quote characters).**
6. Type the user name and password and click on the 'Login' button.
7. This will display the Multi-site Manager application user interface.

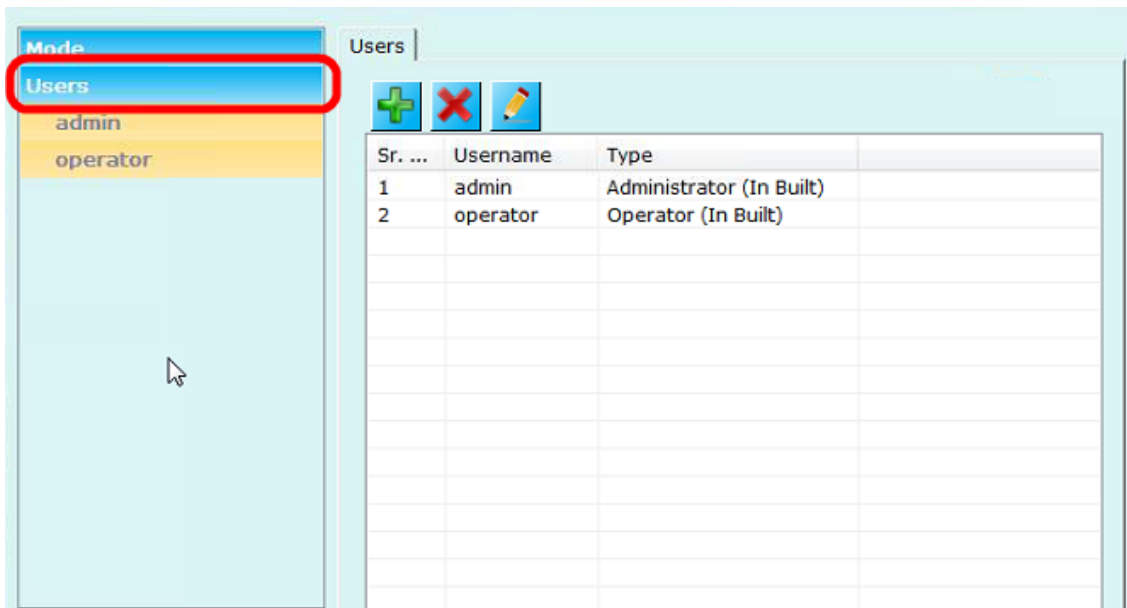


8. The default 'Client System Mode' is 'Single Site Monitor'.
9. Click on the 'Edit' button. This will enable the user interface elements.
10. Set the 'Client System Mode' to 'Multiple Site Monitor'.

11. Click on the 'Save' button to save the changes. This will display additional tabs in the navigation menu available on the left side

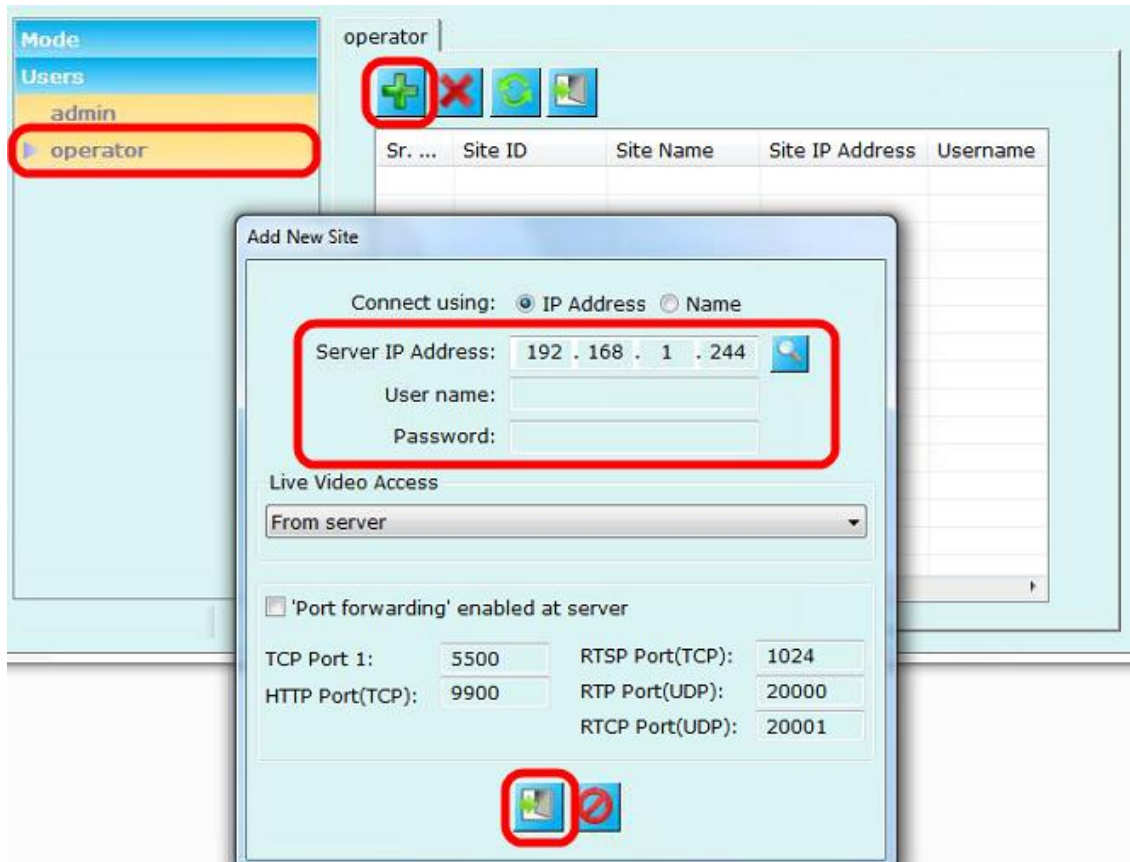


12. Click on the 'Users' link from the left hand side navigation menu, to view the list of users.

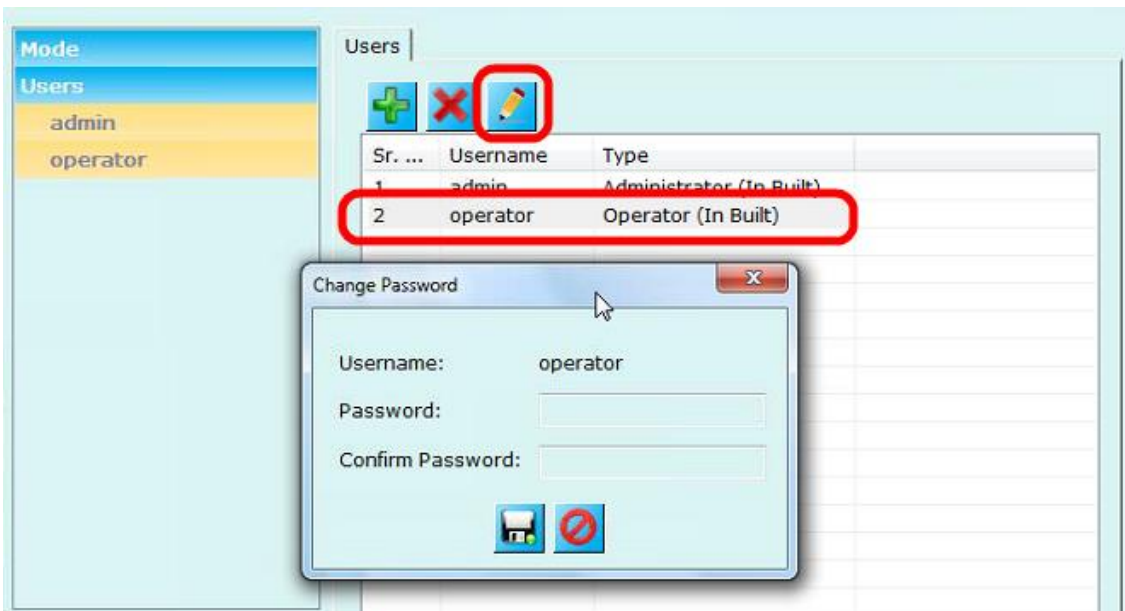


13. By default two users "admin" and "operator" will be available in the list
14. Click on the 'Users -> operator' link from the left hand side navigation menu.
15. This will display the page showing the list of sites, associated with the 'operator' user. The list of sites will be empty when accessed for the first time

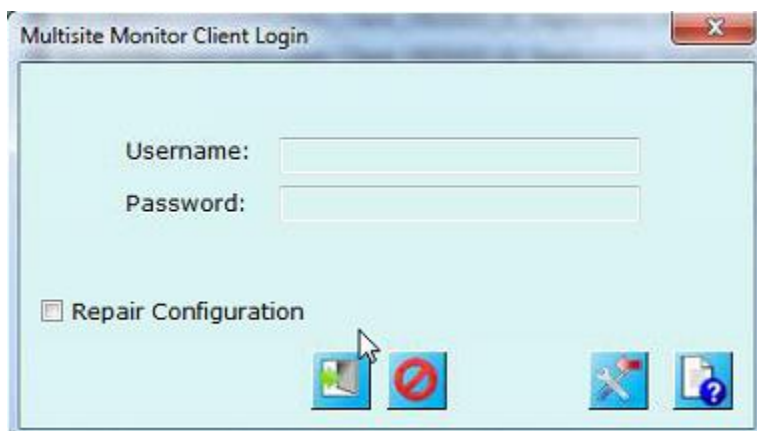
16. Click on the 'Add new site..' button. This will display the 'Add New Site' dialog box. (This dialog is similar to the login dialog which is displayed when the Security Management System client application is executed in 'Single server connection mode')



17. Type the IP address of the Security Management System server. Type the username and password. This login information should be for an 'Operator' privilege user defined in the target Security Management System server application.
18. Click on the 'Login' button.
19. If the login information is correct and if the Security Management System server software authorizes the connection, the site is added to the list of sites.
20. Add more sites, following the steps 16 to 19.
21. Click on the 'Users' link from the left hand side navigation menu, to view the list of users.
22. Select the 'operator' user from the list and click on the 'Edit' button available above the list. This will pop up the 'Change password' dialog box.



23. The default password for the 'operator' user is 'operator' (without the quote characters). If required please type the new password and re-confirm by typing it again; and click on the 'Save' button to change the 'operator' user password.
24. Close the 'Multi-site Manager' application.
25. Access the programs menu shortcut '[Programs Menu] -> Security Management System -> Client -> Security Management System Client', to launch the Security Management System client application.
26. The login dialog will be different now, as the client application is running in the 'Multiple site monitoring' mode.

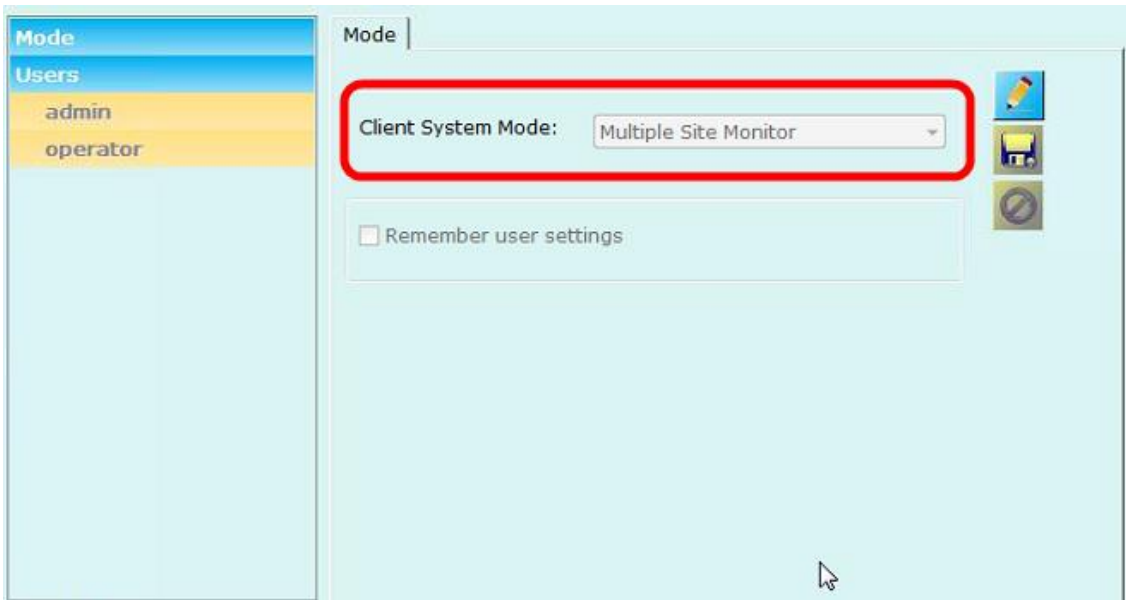


27. Type the username as 'operator'.

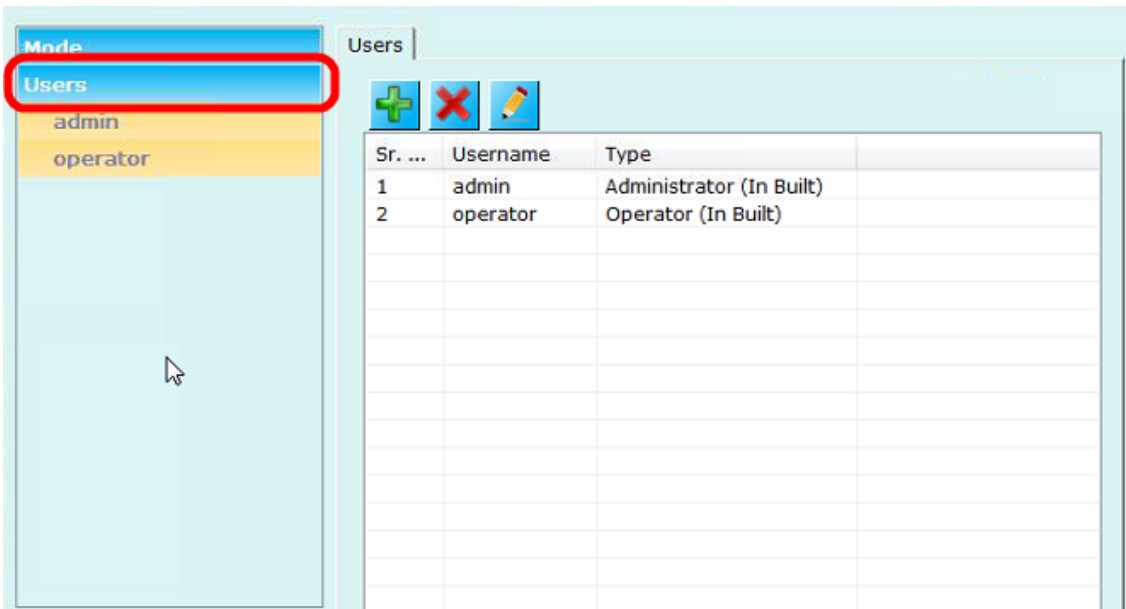
28. Type the password set for the 'operator' user in the 'Multi-site Manager' application, in step 23. If the password for the 'operator' user is not changed in step 23, please use the default password which is 'operator' (without the quote characters)
29. Click on the 'Login' button.
30. The Security Management System client application will now connect to all Security Management System servers, which are configured in the 'Multi-site Manager' application for the 'operator' user. All tree controls will display the nodes for each server (site) and sub-nodes as cameras available within each server (site).

## (B) Adding new users

1. The two users “admin” and “operator” are available by default in the list of users in the ‘Multi-site Client Manager’. These are ‘in built’ users and can not be deleted, hence will always be available.
2. The in-built ‘admin’ user is ‘Administrator’ type user and is only used for logging in to the ‘Multi-site Client Manager’ application.
3. The in-built ‘operator’ user is ‘Operator’ type user and hence can be used for logging in from the login dialog when Security Management System client software is executed in multi-site monitor mode.
4. It is possible to add more ‘Operator’ type users to the ‘Multi-site Client Manager’ application, each user having different username, password and list of sites associated with it. Any of the newly added ‘Operator’ type users can be used for logging in from the login dialog when Security Management System client software is executed in multi-site monitor mode.
5. Close the Security Management System client application.
6. If the Security Management System client watchdog application is running, please close that too.
7. Access the programs menu shortcut ‘[Programs Menu] -> Security Management System -> Client -> Tools -> Multi-site Client Manager’.
8. This will display the login dialog.
9. Type the ‘User Name’ as ‘admin’ (without the quote characters) and type the password for the ‘admin’ user. If password for the ‘admin’ user has not been changed, please use the default password which is ‘admin’ (without the quote characters).
10. Make sure that the ‘Client System Mode’ is set to ‘Multiple Site Monitor’

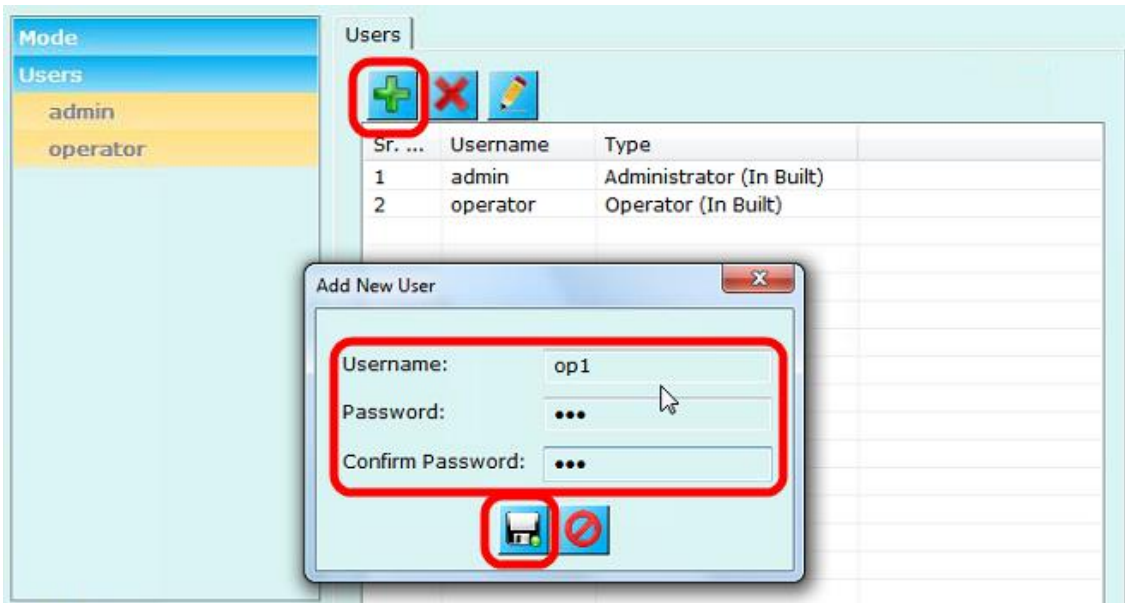


11. Click on the 'Users' link from the left hand side navigation menu, to view the list of users.

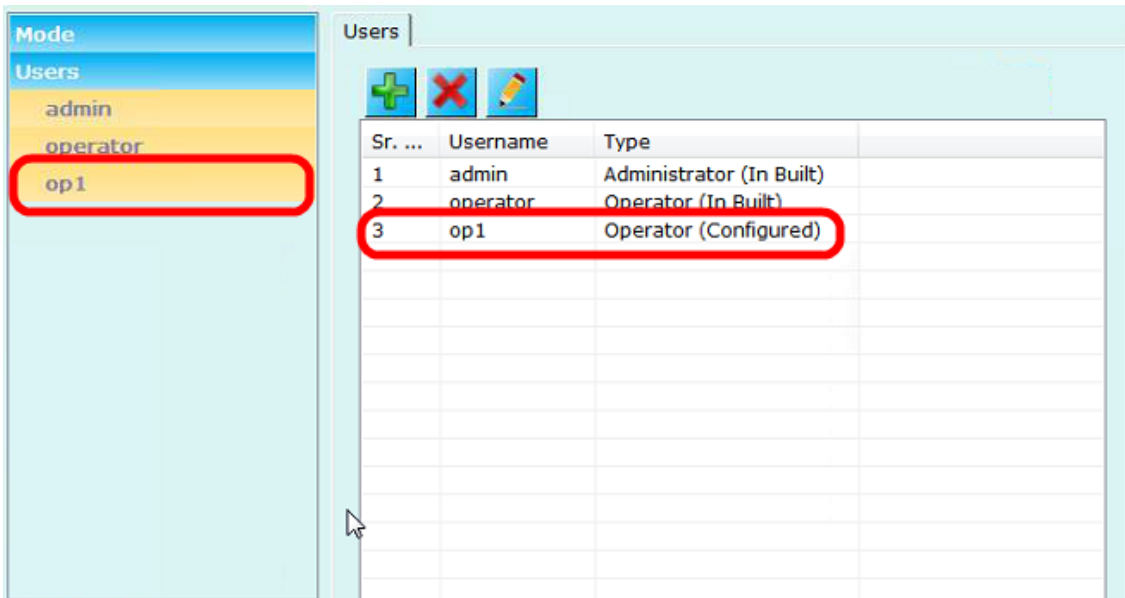


12. To add new 'Operator user', click on the 'Add new user..' button. This will pop up the 'Add New User' dialog box.



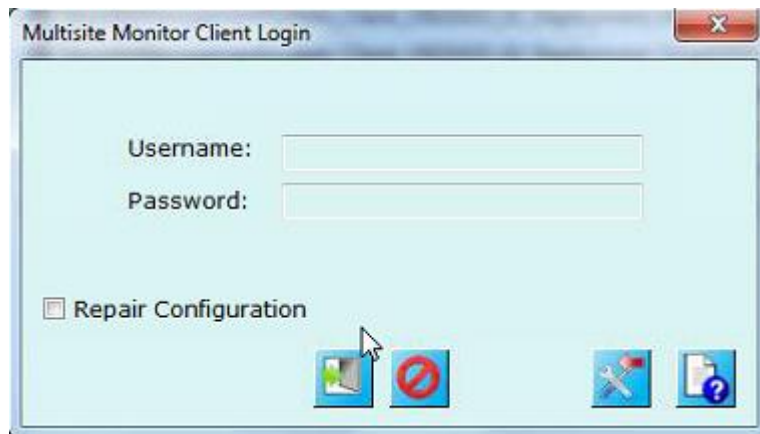


13. Type the 'Username' for the new user. Type the 'Password' and type the password again to re-confirm it.
14. Click on the 'Save' button to finish adding new 'Operator' user.
15. New user entry will be added in the list of users. Also, a new link with the newly added user name will get added under the 'Users' section, available in the left hand side navigation menu.



- The new user will have type 'Operator (Configured)'
16. Click on the new link with the newly added user name under the 'Users' section, available in the left hand side navigation menu.

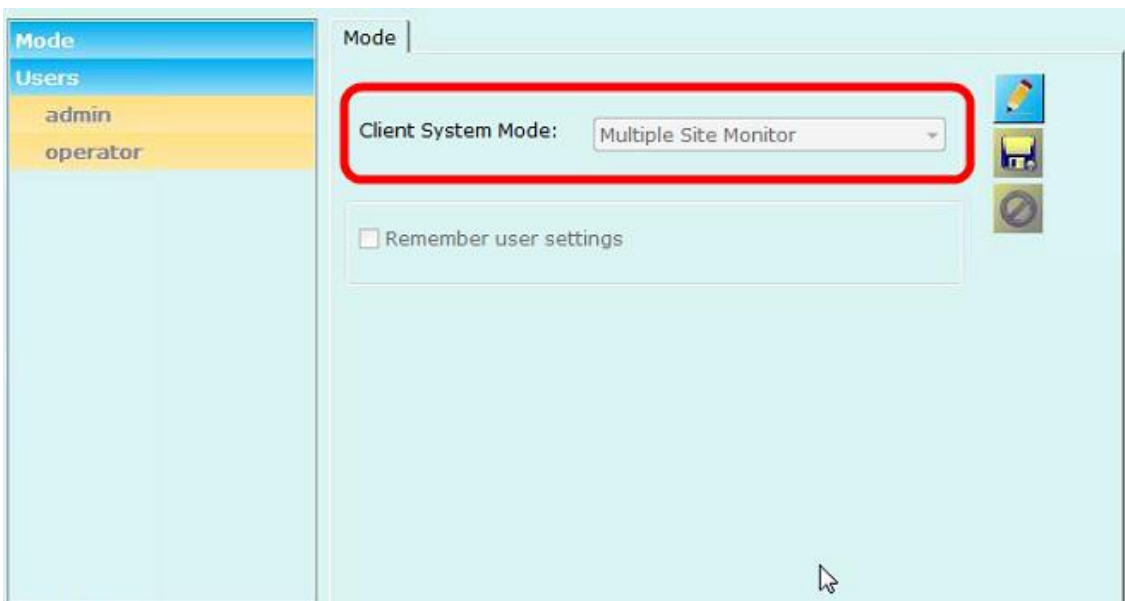
17. This will display the page showing the list of sites, associated with the newly added user. The list of sites will be empty when accessed for the first time.
18. Add sites following the steps as mentioned in “(A) Configuring ‘Multiple Site Monitoring’ mode” section – point 16 to point 20. In “(A) Configuring ‘Multiple Site Monitoring’ mode” section – point 16 to point 20, sites were configured for built-in ‘operator’ user; where-as in this step, the sites will be configured for the newly added user.
19. Close the ‘Multi-site Manager’ application.
20. Access the programs menu shortcut ‘[Programs Menu] -> Security Management System -> Client -> Security Management System Client’, to launch the Security Management System client application.
21. The login dialog will be different now, as the client application is running in the ‘Multiple site monitoring’ mode.



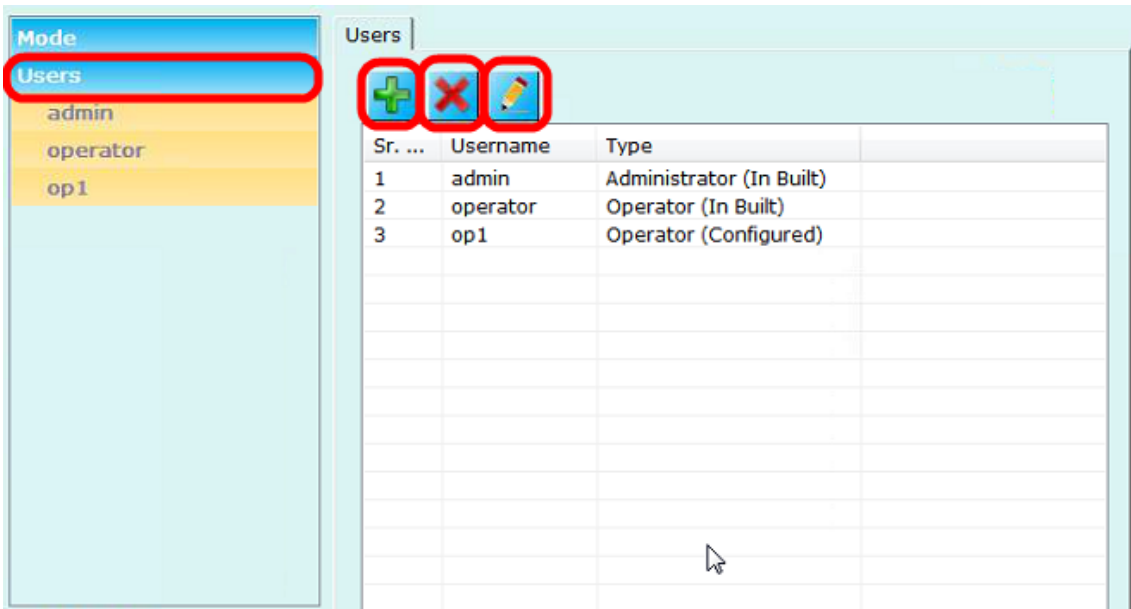
22. Type the username for any ‘Operator’ type user configured in the ‘Multi-site Client Manager’ application, and type the password associated with this user.
23. Click on the ‘Login’ button.
24. The Security Management System client application will now connect to all Security Management System servers, which are configured in the ‘Multi-site Manager’ application for the logged in ‘Operator’ type user. All tree controls will display the nodes for each server (site) and sub-nodes as cameras available within each server (site).

## (C) Managing users

1. Close the Security Management System client application.
2. If the Security Management System client watchdog application is running, please close that too.
3. Access the programs menu shortcut '[Programs Menu] -> Security Management System -> Client -> Tools -> Multi-site Client Manager'.
4. This will display the login dialog.
5. Type the 'User Name' as 'admin' (without the quote characters) and type the password for the 'admin' user. If password for the 'admin' user has not been changed, please use the default password which is 'admin' (without the quote characters).
6. Make sure that the 'Client System Mode' is set to 'Multiple Site Monitor'



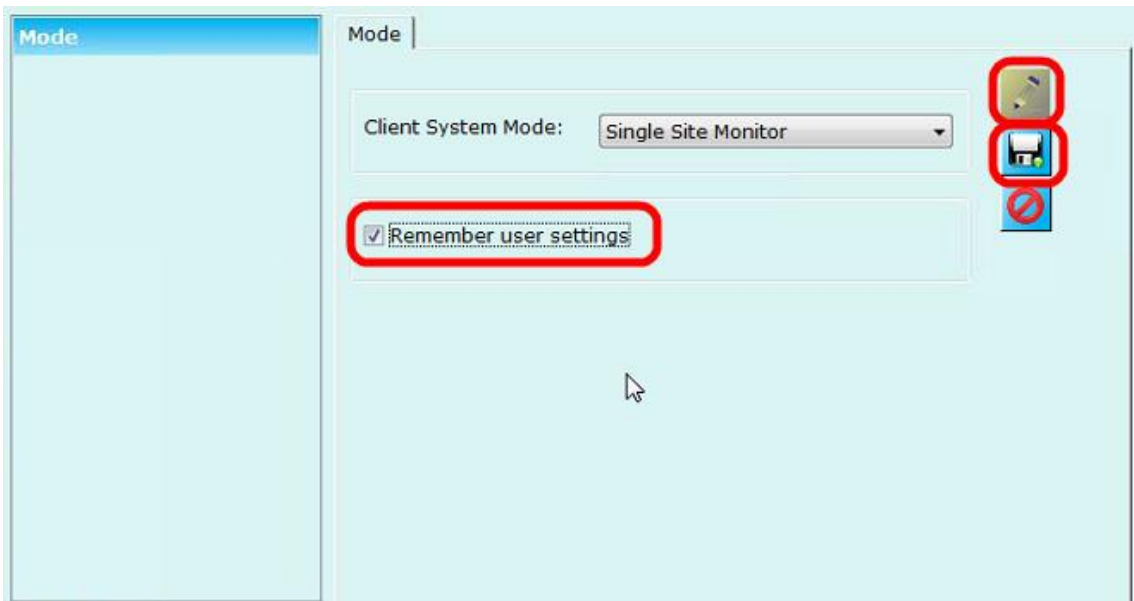
7. Click on the 'Users' link from the left hand side navigation menu, to view the list of users.



8. The 'Add new user..' button available above the users list can be used to add new 'Operator' type user.
9. Any user from the list can be selected and can be deleted by clicking on the 'Remove selected user' button.  
Note – It is not allowed to remove / delete the 'In Built' users ('admin' and 'operator' are the 2 In Built users which can not be deleted)
10. Any user from the list can be selected and the password for the selected user can be changed by clicking on the 'Change password for the selected user' button.
11. Sites (Security Management System server connections) can be configured for each of the 'Operator' type users. Please click on the link associated with the user under the 'Users' section, available in the left hand side navigation menu. This will show the sites configured for that user. The sites can be managed from the buttons available above the sites list.  
Note – Since 'admin' user is not 'Operator' type user, sites can not be configured for 'admin' user.
12. Close the 'Multi-site Manager' application.

## (D) Remembering user settings

1. Several settings are available in the Security Management System client software – screens, layout profiles, layout profiles sequences, alarm handling configuration etc.
2. It is possible to configure the Security Management System client software to remember these settings separately for every user, so that same settings will be restored and used when the same user logs in again.
3. In 'Single Site Monitor' mode, the 'Remember user settings' check box needs to be selected in the 'Multi-site Manager application'



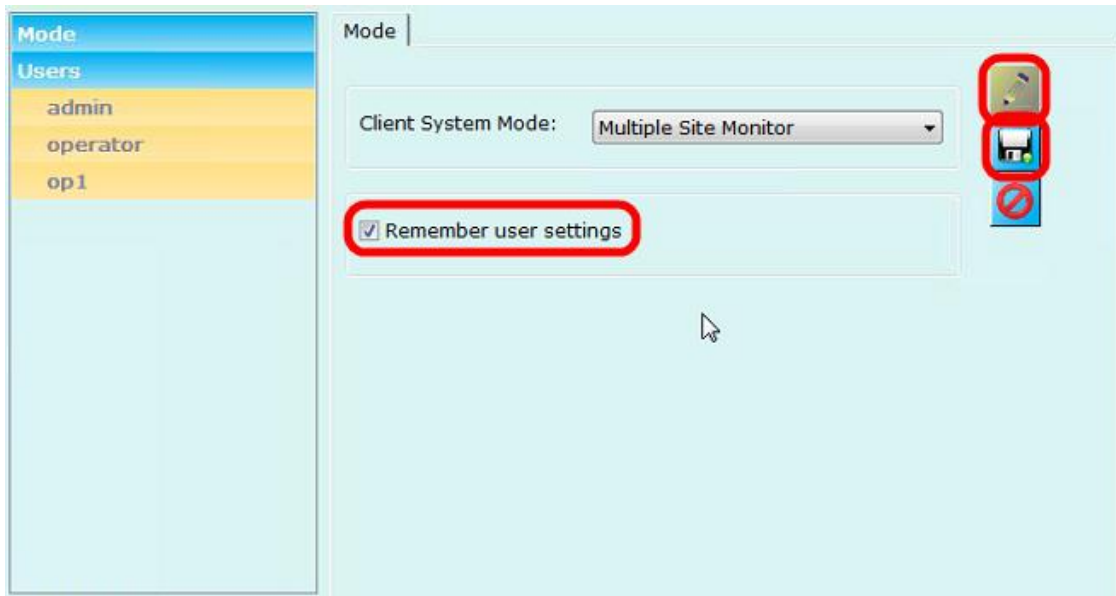
Click on the 'Edit' button to enable the user interface.

Click on the 'Remember user settings' check-box so that it is displayed as selected.

Click on the 'Save' button to save the settings.

Close the 'Multi-site Manager' application.

4. When 'Remember user settings' is selected for 'Single Site Monitor' mode, the settings are remembered separately for every Security Management System server to which the Security Management System client connects.
5. In 'Multiple Site Monitor' mode, the 'Remember user settings' check box needs to be selected in the 'Multi-site Manager application'



Click on the 'Edit' button to enable the user interface.  
Click on the 'Remember user settings' check-box so that it is displayed as selected.  
Click on the 'Save' button to save the settings.  
Close the 'Multi-site Manager' application.

6. When 'Remember user settings' is selected for 'Multiple Site Monitor' mode, the settings are remembered separately for every 'Operator' type user used for logging in to Security Management System client software.